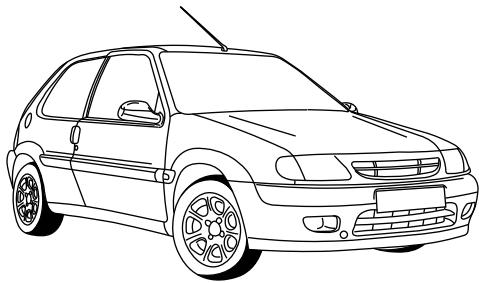




CITROEN Saxo htb.
PEUGEOT 106 htb.

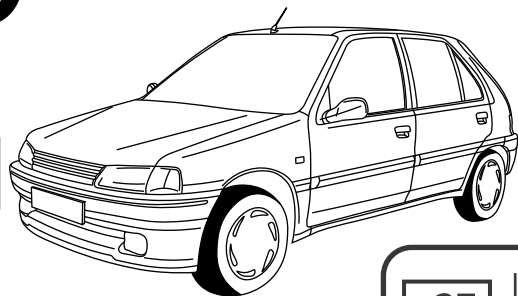


1995 - 2003
1996 - 2003



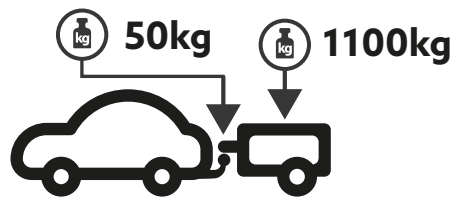
CITROEN
Saxo

PEUGEOT
106



e27 | 00 0296

$$D = \frac{\text{MAX kg} \times \text{MAX kg}}{\text{MAX kg} + \text{MAX kg}} \times 0,00981$$



$$D = 5,77 \text{ kN}$$

M10Z-17 - 5x



P10 - 3x



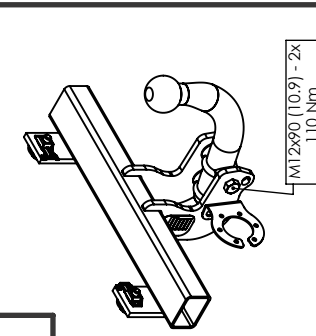
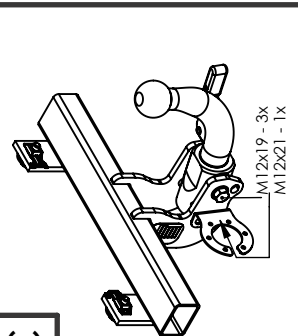
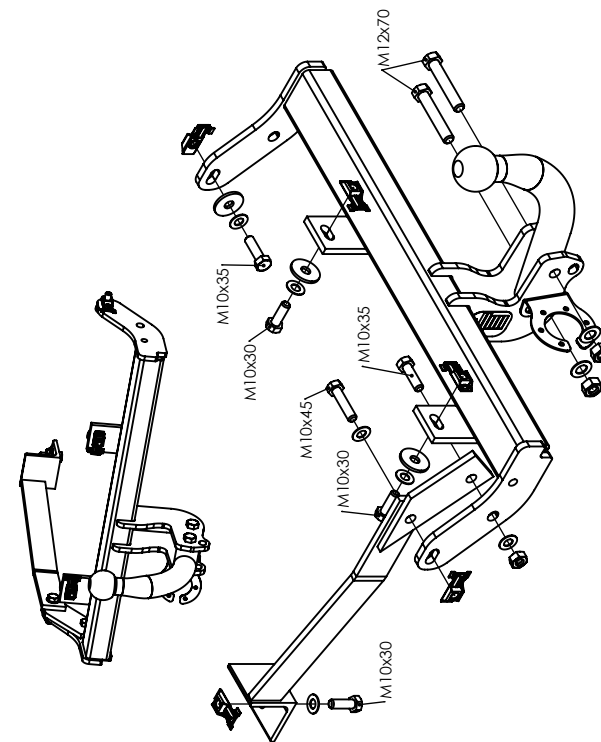
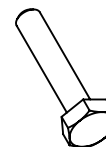
PP10 - 6x
PP12 - 2x (A-I)
PP12 - 4x (C)



M10 - 1x
M12 - 2x (A-I)



M10x30 - 3x
M10x35 - 2x
M10x45 - 1x
M12x70 - 2x (A)
M12x90 - 2x (I)
M12x19 - 3x (C)
M12x21 - 1x (C)



A

CITROEN SAXO, PEUGEOT 106
Kod: C0096 (AIC) - 14. 5. 2023

AIC 325 12 3

M12x90 (10.9) - 2x
110 Nm



Location
Vlachy 142, 032 13 Vlachy



Phone
+ 421 44 55 93 434



Website
www.galia.sk



Email
galia@galia.sk



Location
Vlachy 142, 032 13 Vlachy



Phone
+ 421 44 55 93 434



Website
www.galia.sk



Email
galia@galia.sk

